

Mt. Jackson Group – Oil and Gas Rights Leasing Opportunity

If your land is located within the areas listed below and you are interested in leasing your oil and gas rights, you are invited to join the Mt. Jackson Group and the Co-eXprise MarketPlace Process. The MarketPlace Process is designed to maximize bonus and royalty payments and realize best available lease terms for your oil and gas rights.

The MarketPlace Process has resulted in an attractive offer for oil and gas rights in the areas listed below, and you have already been notified that you are within this area. This handout is a reminder of the details of the offer for your records. If you have any questions about the specific offer details, please call our Sales Directors, Bill Smith and Chris Cracraft, at 724-933-1180. Thank you!

Offer Area

- | | |
|---------------------|-----------------------|
| Big Beaver Borough | Hookstown Borough |
| Brighton Township | Industry Borough |
| Chippewa Township | Midland Borough |
| Darlington Borough | New Galilee Borough |
| Darlington Township | Ohioville Borough |
| Enon Valley Borough | Potter Township |
| Georgetown Borough | Shippingport Borough |
| Glasgow Borough | South Beaver Township |
| Greene Township | Vanport Township |

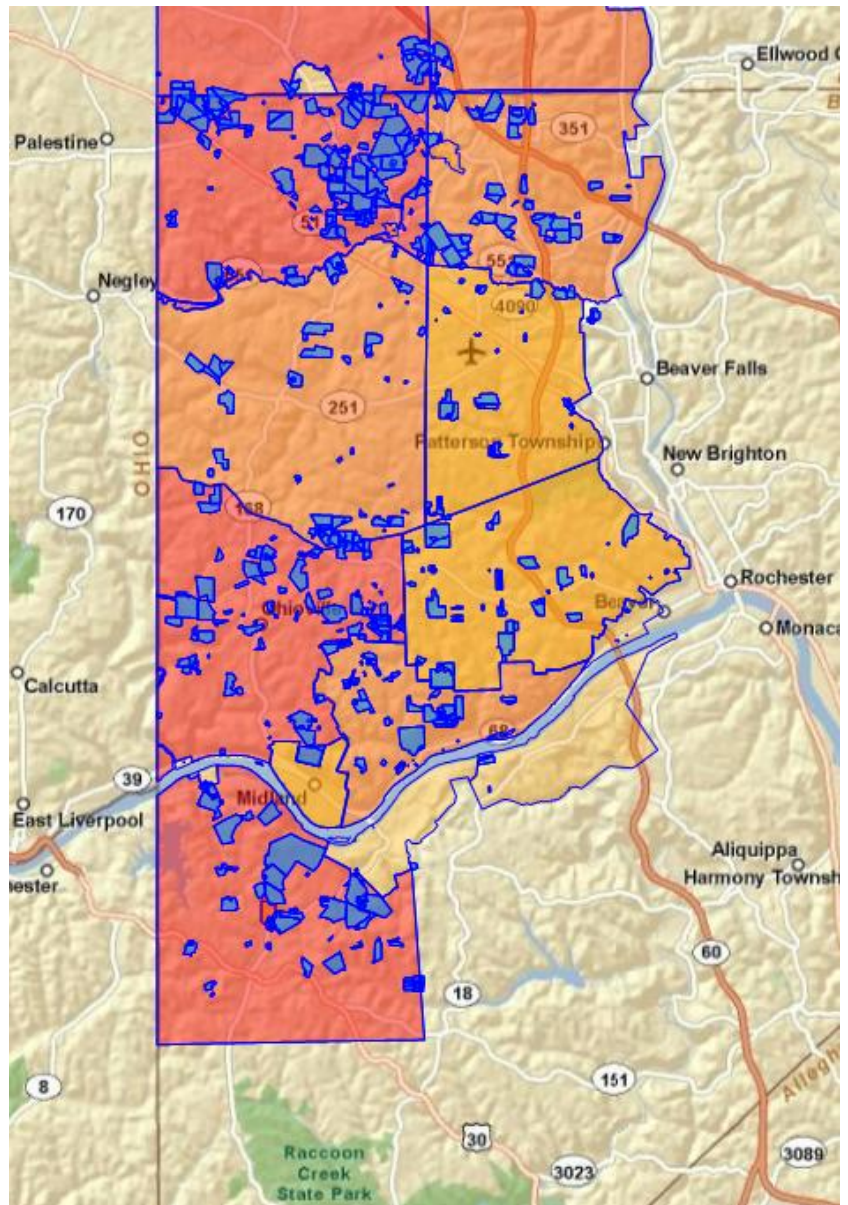
Legend

Municipality Colors

- <99 Acres
- 100-199 Acres
- 200-999 Acres
- 1000-4999 Acres
- >5000 Acres

Parcel Colors

- Offer on the table



BEST MARKET PRICE **DELIVERED.**

Offer Details

- The operator that placed the offer is Chesapeake Appalachia, LLC. They are the only operator that is currently interested in leasing acreage in your area.
- The offer includes a \$2,350 per acre bonus payment, a 15% gross royalty payment, and a very landowner-friendly lease.
 - These numbers are lower than the \$3,000 per acre bonus strike price and the 17% royalty strike price established in our MarketPlace agreement, so you are not obligated to sign.
 - Chesapeake is looking for a high percentage of the acreage to accept the offer, and **may withdraw if the amount of acreage does not meet their expectations.**

Offer Pros

- The submitted offer is the best current market price available in your area, has very favorable lease terms, and is an offer on the table right now. In addition, Chesapeake is a large scale operator and is already drilling in your area.
- Chesapeake is interested in all acreage involved in a large geographic area, allowing for neighbors to get involved in the offer as it moves forward. Please see the enclosed map and list of municipalities to view the total geographic area.
- If you wait, there is a chance that lease prices may go down, based on a variety of factors including natural gas prices remaining low or decreasing further, or competition not entering the area because Chesapeake holds a growing amount of land under lease.

Offer Cons

- Does not meet our strike prices of \$3,000 per acre and 17% royalties.
- If you wait, there is a chance that lease prices may go up, based on a variety of factors including natural gas prices increasing or competition entering the area.

Offer Alternatives

- For yourself and your parcels, you may choose to reject the offer and wait and see if future offers materialize.
 - Estimated waiting time is 6 – 12 months - Co-eXprise will continue to market your mineral rights for leasing.

Next Steps

- If you are not already receiving our email updates including the tally of intent cards and current lease documents, please provide us with your email by filling it out on your lease intent card or emailing us at mtjackson@co-exprise.com.
- If you are ready to state your intent to move forward with this offer, please sign and complete the lease intent card and return it to us - the lease intent card must be returned no later than July 12th.
- If you indicate a 'Yes' response on your lease intent card, then the next step will be to sign an Acceptance Agreement. This will be facilitated by a meeting to be held by Co-eXprise in the near future, time and location to be determined.
- The Final Lease Signing will be scheduled once all Acceptance Agreements have been received. Bonus payments will be made approximately 90 days after the Final Lease Signing.

Thank you for taking the time to review this offer.

Sincerely,
Your Co-eXprise Team

BEST MARKET PRICE **DELIVERED.**