

# Attention Landowners in Mercer, Lawrence, and Beaver Counties!

## Mt. Jackson Group – Oil and Gas Rights Leasing Opportunity

If your land is located within the areas listed below, and if you are interested in leasing your oil and gas rights, you are invited to join the Mt. Jackson Group to maximize your bonus and royalty payments and obtain the best available lease terms for your oil and gas rights.

The Mt. Jackson Group has received an attractive offer to Lease oil and gas rights in the areas listed below, and if your property qualifies, you may have the opportunity to be included in this offer. To learn more about the offer and join the Mt. Jackson Group, please attend one of our upcoming meetings, to be held on:

### Meeting Details

Time: 6 PM  
Dates: Wednesday, August 31  
Thursday, September 1  
Place: Bessemer Croatian Club  
(601 E Poland Ave.; Bessemer, PA 16112)

### Offer Area:

#### Mercer County Townships

East Lackawannock  
Farrell  
Hermitage  
Lackawannock  
Mercer  
Shenango  
West Middlesex  
Wheatland  
Wilmington

#### Beaver County Townships

Big Beaver  
Darlington Borough  
Darlington Township  
New Galilee  
South Beaver

#### Lawrence County Townships

Bessemer  
Enon Valley  
Hickory  
Little Beaver  
Mahoning  
Neshannock  
New Beaver  
New Castle  
New Wilmington  
North Beaver  
Pulaski  
S.N.P.J  
Shenango  
South New Castle  
Taylor  
Union

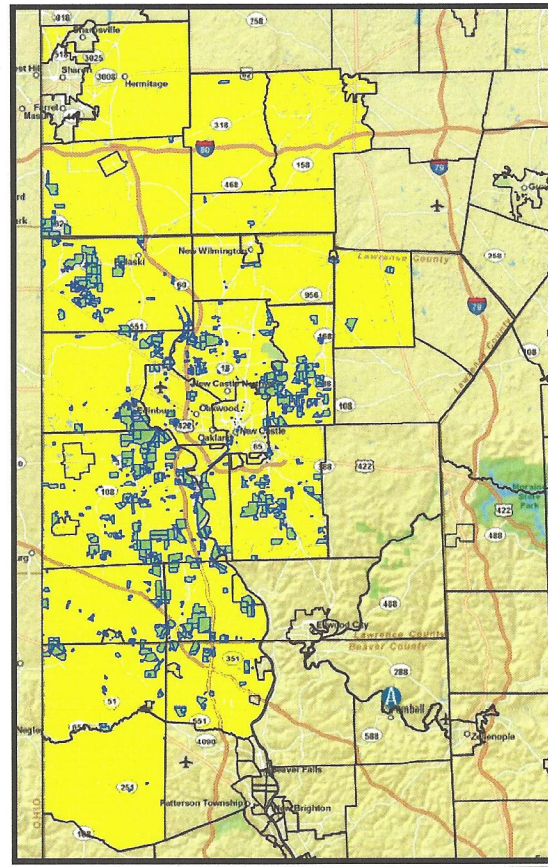
BEST MARKET PRICE **DELIVERED.**

## Offer Details

- The offer is from a major oil and gas exploration and production company that is commencing exploration and production in portions of Lawrence, Beaver, and Mercer Counties.
- The offer includes a \$3,000 gross per acre bonus payment and a 17% gross royalty payment, minus fees to Co-eXprise.
- The offer includes very landowner-friendly lease terms.

## Highlights of the Offer

- The submitted offer is the best current market price available in the offer area and has very favorable lease terms.
- The offer is from an experienced operator that has significant expertise in horizontal drilling.
- The operator is interested in all acreage in the offer area, allowing for neighbors to get involved in the process as it moves forward to close. Please see the map and list of municipalities to view the total offer area.



## Next Steps

- Attend one of our FINAL UPDATE MEETINGS to learn more about the offer:  
Time: 6 PM  
Dates: Wednesday, August 31  
Thursday, September 1  
Place: Bessemer Croatian Club, 601 E Poland Ave., Bessemer, PA 16112
- Submit Co-eXprise MarketPlace Agreement to join the Mt. Jackson Landowners Group.
- Mark your calendar to attend one of the Lease Signing Events:
  - Texas E&P Company Meet-and-Greet with Texas-Style Barbeque (Optional)  
When: Tuesday, September 6<sup>th</sup>, from 6:00 – 9:00 p.m.  
Where: The Cathedral, 110 E. Lincoln Ave., New Castle, PA 16101
  - Lease Signing Events (Attendance Required to Obtain a Lease)  
When: Wednesday, September 7<sup>th</sup>, from 10:00 a.m. – 8:00 p.m. (Last Names A-G)  
Thursday, September 8<sup>th</sup>, from 7:00 a.m. – 6:00 p.m. (Last Names H-N)  
Friday, September 9<sup>th</sup>, from 8:00 a.m. – 8:00 p.m. (Last Names O-Z)  
Where: The Cathedral, 110 E. Lincoln Ave., New Castle, PA 16101

***If you have any questions, please contact Co-eXprise at 724-933-1180.***

**BEST MARKET PRICE DELIVERED.**